

HABITAS TOWNHOMES

RELEASE SIX

HABITAS
AURORA

A project by



DEVELOPMENT
VICTORIA



NATURE’S CALM

Live where calming green outlooks meet lively activity. Where natural beauty and tranquillity intersect with the flourishing, connected Aurora community. Habitas - a sanctuary you’ll love coming home to.



Images from left to right
— Conservation Reserve
— Aurora Adventure Playground
— Okami Japanese Restaurant

ESTABLISHED NEIGHBOURHOOD

Experience the vibrant social heart of the Aurora community. Aurora Village is just steps from your Habitas front door, for everyday essentials and specialty goods at your fingertips.


























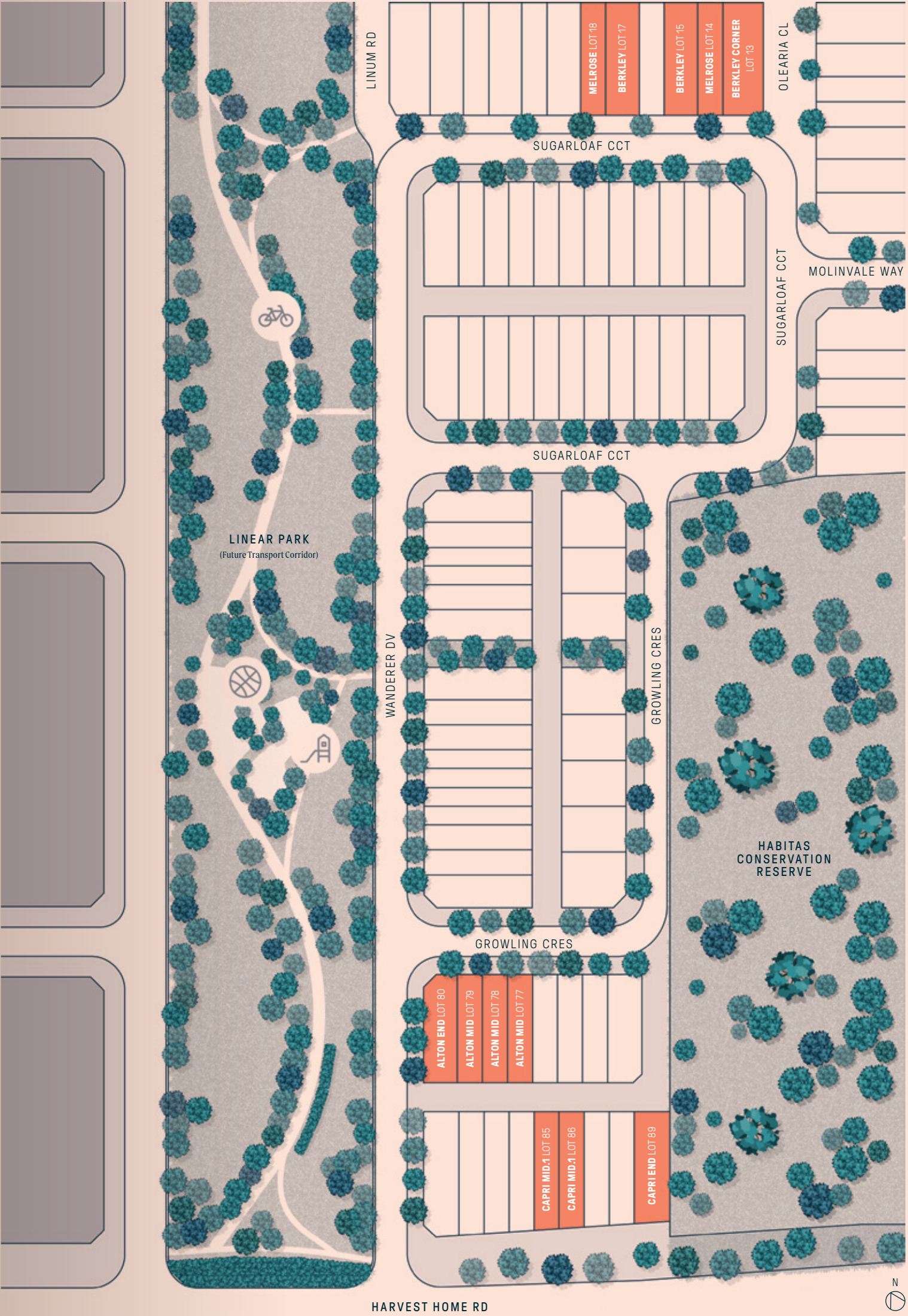
Aurora Village

Fringed by nature and adjacent to every convenience, this desirable haven represents the perfect blend of connection, amenity and accessibility.

Release six product range

Release six offers a selection of 3 and 4 bedroom townhomes. Flexible and functional, these exquisite contemporary residences have been designed with modern families in mind. Sleek spaces showcase impressive architectural style, paired with exceptional comfort.

ALTON MID TOWNLIVING BY METRICON	 4	 3	 2
ALTON END TOWNLIVING BY METRICON	 4	 3	 2
CAPRI MID.1 TOWNLIVING BY METRICON	 3	 2.5	 2
CAPRI END TOWNLIVING BY METRICON	 3	 2.5	 2
BERKLEY CORNER SOHO LIVING	 3	 2.5	 2
BERKLEY SOHO LIVING	 3	 2.5	 2
MELROSE SOHO LIVING	 3	 2.5	 1



Development Victoria supports the Victorian Government's priority of increasing housing supply, diversity and affordability. Approximately 10% of the homes throughout Habitas Aurora may be developed as part of Victoria's Big Housing Build to deliver social housing in Wollert.



Artist impression

LOT 84
CAPRI MID .2

LOT 85
CAPRI MID.1

LOT 86
CAPRI MID.1

LOT 87
CAPRI MID.2

LOT 88
CAPRI MID.2

LOT 89
CAPRI END



**A HOME TO SUIT
EVERY LIFESTYLE**

TOWNLIVING™ | **m**
metricon

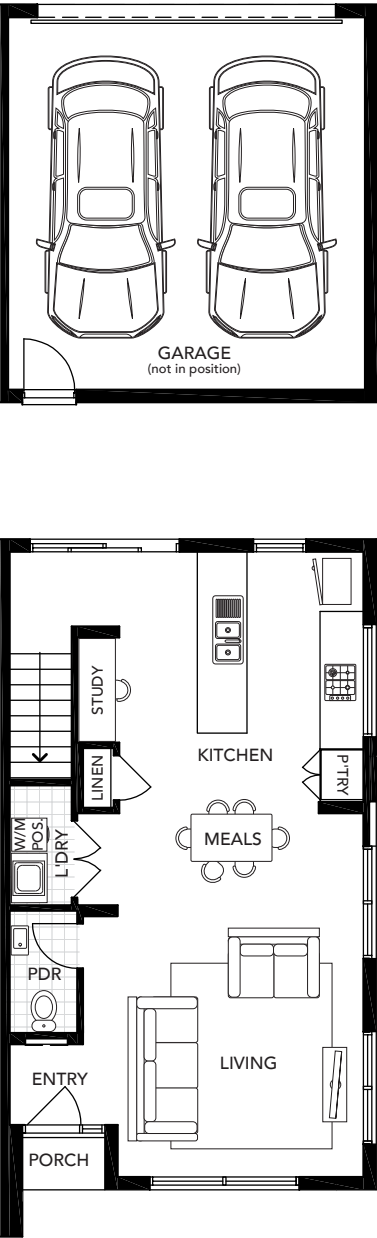
CAPRI
END

Ground Floor	62.61m²
First Floor	63.64m²
Garage	38.81m²
Porch	1.12m²
TOTAL	166.18m²
Land Area	225.00m²

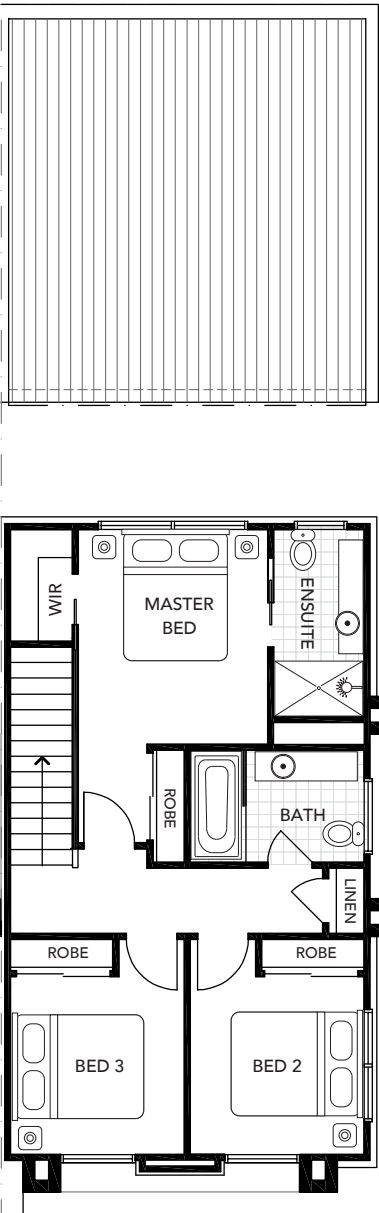
3 2.5 2

Applicable to Lot:
89

A light-filled design, the Capri delivers true family living in a stylish format. Its inviting entrance leads to a stunning living, entertainment and dining area, as well as a laundry, linen closet and full 2 car garage. Upstairs you'll discover 3 substantial bedrooms offering the perfect retreat for each family member, and a gorgeous main bathroom.



Ground Floor



First Floor

CAPRI
MID.1

Ground Floor	62.03m²
First Floor	62.27m²
Garage	38.46m²
Porch	1.12m²
TOTAL	163.88m²
Land Area Lot 85	169.00m²
Land Area Lot 86	166.00m²

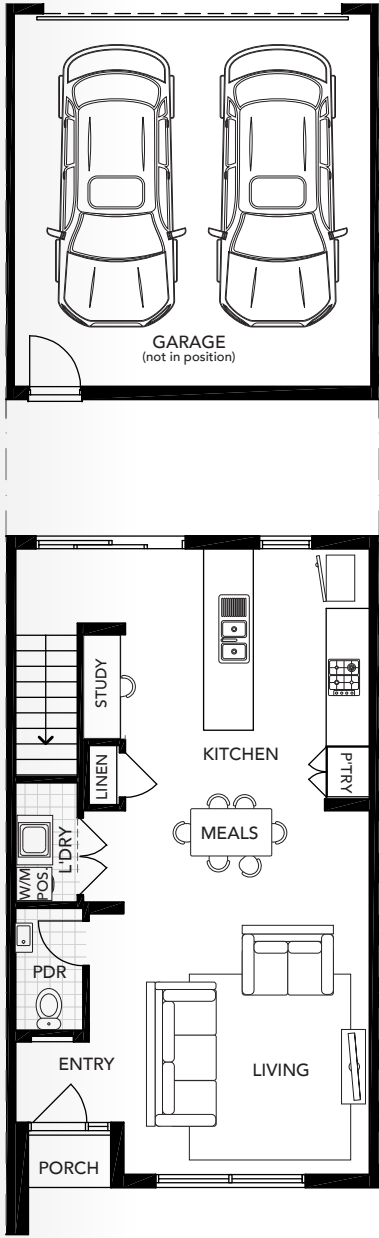
3 2.5 2

Applicable to Lots:
85, 86

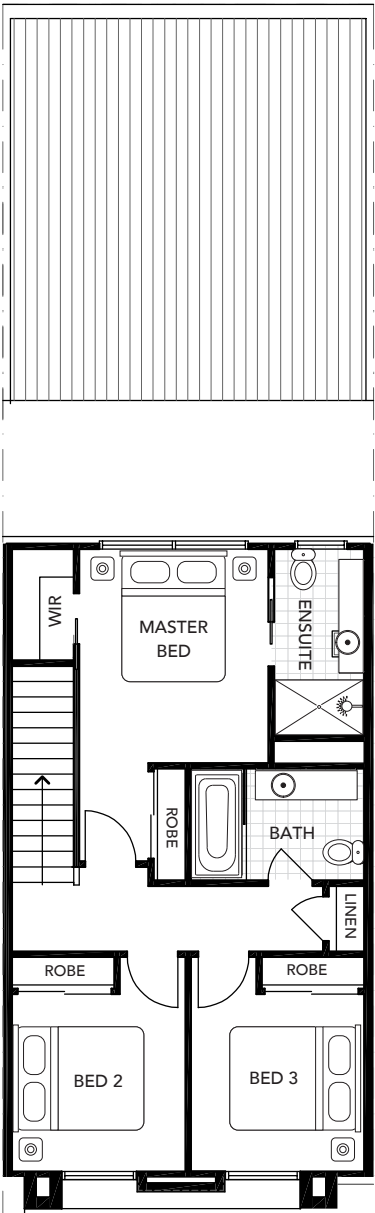
A cutting-edge townhome, the Capri delivers you true family living. Its inviting entrance leads to a stunning living, entertainment and dining area, as well as a laundry, linen closet and full 2 car garage. Upstairs are 3 substantial bedrooms offering the perfect retreat for each family member, and a gorgeous main bathroom.



Lot 85 Reversed



Ground Floor



First Floor

LOT 76
ALTON MID

LOT 77
ALTON MID

LOT 78
ALTON MID

LOT 79
ALTON MID

LOT 80
ALTON END

A HOME TO SUIT EVERY LIFESTYLE

TOWNLIVING™ | **m**
metricon

ALTON
END

Ground Floor	69.95m²
First Floor	58.73m²
Garage	38.65m²
Porch	6.13m²
TOTAL	173.46m²
Land Area	206.00m²



Applicable to Lot:
80

The intelligently designed Alton devotes the ground floor to family living, perfect for entertaining. Three generous bedrooms sit upstairs, with the master ensuite including a walk-in wardrobe. A home office for yourself or a fourth bedroom on the ground floor giving you the flexibility for what you need.



Artist impression — Lot 80

ALTON
MID

Ground Floor	68.83m²
First Floor	59.06m²
Garage	38.46m²
Porch	6.13m²
TOTAL	172.48m²
Land Area	156.00m²



Applicable to Lots:
77,78,79

The intelligently designed Alton devotes the ground floor to family living, perfect for entertaining. Three generous bedrooms sit upstairs, with the master ensuite including a walk-in wardrobe. A home office for yourself or a fourth bedroom on the ground floor giving you the flexibility for what you need.



Artist impression — Lot 79



LOT 18
MELROSE

LOT 17
BERKLEY

LOT 16
MELROSE

LOT 15
BERKLEY

LOT 14
MELROSE

LOT 13
BERKLEY CORNER



**LIVE SURROUNDED
BY STYLE**

SOHO
LIVING

BERKLEY
CORNER

Ground Floor	59.44m²
First Floor	85.44m²
Garage	34.55m²
Porch	3.88m²
TOTAL	183.31m²
Land Area	261.00m²

3 2.5 2

Applicable to Lot:
13

The Berkley Corner townhome is space-savvy and comfort-driven. The kitchen flows seamlessly into the dining and living areas and this floorplan is flexible with an option to upgrade from 3 bedrooms to 4.



Artist impression – Lot 24



Ground Floor

First Floor

BERKLEY

Ground Floor	58.18m²
First Floor	85.04m²
Garage	34.55m²
Porch	2.28m²
TOTAL	180.05m²
Land Area	216.00m²

3 2.5 2

Applicable to Lots:
15, 17

The Berkley townhome has a flexible floorplan with 3 or 4 bedroom options available. This stylish townhome includes an open-plan kitchen, dining and living area, large laundry space and ample storage for you and your growing family.



Artist impression – Lot 17



Ground Floor

First Floor

MELROSE

3 2.5 1

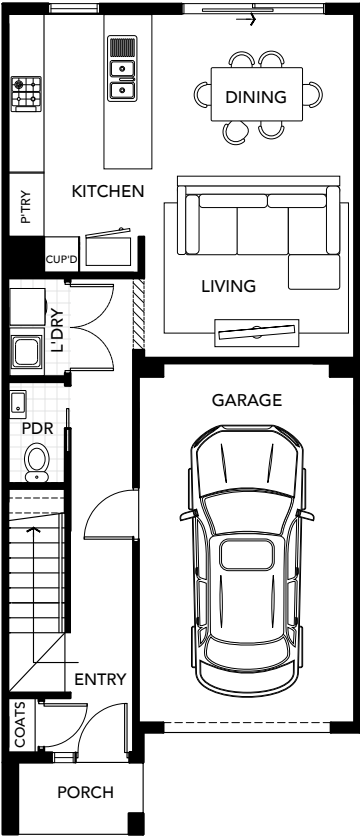
Ground Floor	51.60m²
First Floor	65.70m²
Garage	22.85m²
Porch	2.83m²
TOTAL	142.98m²
Land Area	162.00m²

Applicable to Lots:
14, 18

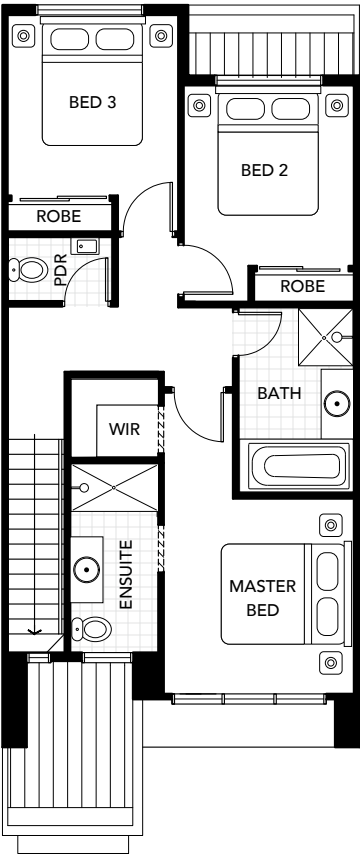
The Melrose townhome is the answer to your new home needs. With 3 bedrooms and 2.5 bathrooms, this well thought-out designed floorplan makes clever use of space so that you have all the comforts of a much larger home.



Artist impression – Lot 14



Ground Floor



First Floor



Habitas Aurora Linear Park Artist impression



Artist impression

QUALITY WITHIN REACH

Development Victoria has partnered with market-leading Australian builders, SOHO Living and Town Living by Metricon to deliver highest quality, architect-designed contemporary townhomes for Habitas residents.



Artist impression

A project by



At Development Victoria we're passionate about making Victoria a great place to be. We create vibrant places across our state, through diverse and strategic property development and urban renewal projects.

We build great homes and communities where people and business can thrive, catering for different budgets, lifestyles and people.

Our homes are designed to be sustainable and affordable – giving more Victorians the opportunity to live where they want to be, without having to compromise on quality.

As the Victorian Government's development arm, we also revitalise iconic public buildings, create important cultural and recreational facilities and repurpose public land, for all Victorians.

We help create a better Victoria.

development.vic.gov.au

With a name you can trust, Metricon's mission is to build homes of the highest quality you can be proud to live in. You have peace of mind that your beautifully designed home has been built to last a lifetime.

townliving.com.au

SOHO
LIVING

Soho Living specialise in creating spaces that encourage physical and emotional connection to design. By employing dynamic thinking and fresh aesthetics, Soho developments create lasting, elegant neighbourhoods you'll love living in.

soholiving.com.au

habitasaurora.com.au

03 8317 3752



@habitas.aurora

Sales Centre

Cnr Harvest Home Rd & Whitelight Ave, Epping

Development Site

286 Harvest Home Rd, Wollert

A project by



The pictures in this brochure are indicative, for illustrative purposes only, and are subject to change. The images in this brochure may be enhanced and may include some artistic licence. They are provided only to generally convey the planned look and feel of the town home. Any dimensions/sizes indicated are nominal only with construction to be within allowable tolerances. While best endeavours have been used to provide that information is accurate, prospective purchasers should not rely on the information contained herein. Existing trees, landscaping and furniture layouts are representational only and furniture is not included. To the extent permitted by law (including the Australian Consumer Law), all information in this brochure is provided "as is" without representation or warranty of any kind as to the accuracy, completeness or suitability for a particular purpose and Development Victoria has no liability to any person under contract, tort, common law or equity or otherwise for any loss, expense, action, liability or damage which may arise from the information contained in this brochure. COPYRIGHT: No part of this work, including the designs and images contained in this brochure, may be reproduced or copied in any form or by any means (graphic, electronic, or mechanical, including photocopying, recording, taping or information retrieval systems) without the written permission of Development Victoria. In the spirit of reconciliation, Development Victoria respectfully acknowledges the traditional custodians of country throughout Victoria and recognises and respects their continuing cultural heritage and connection to land. We pay our respects to their Elders past, present and emerging.